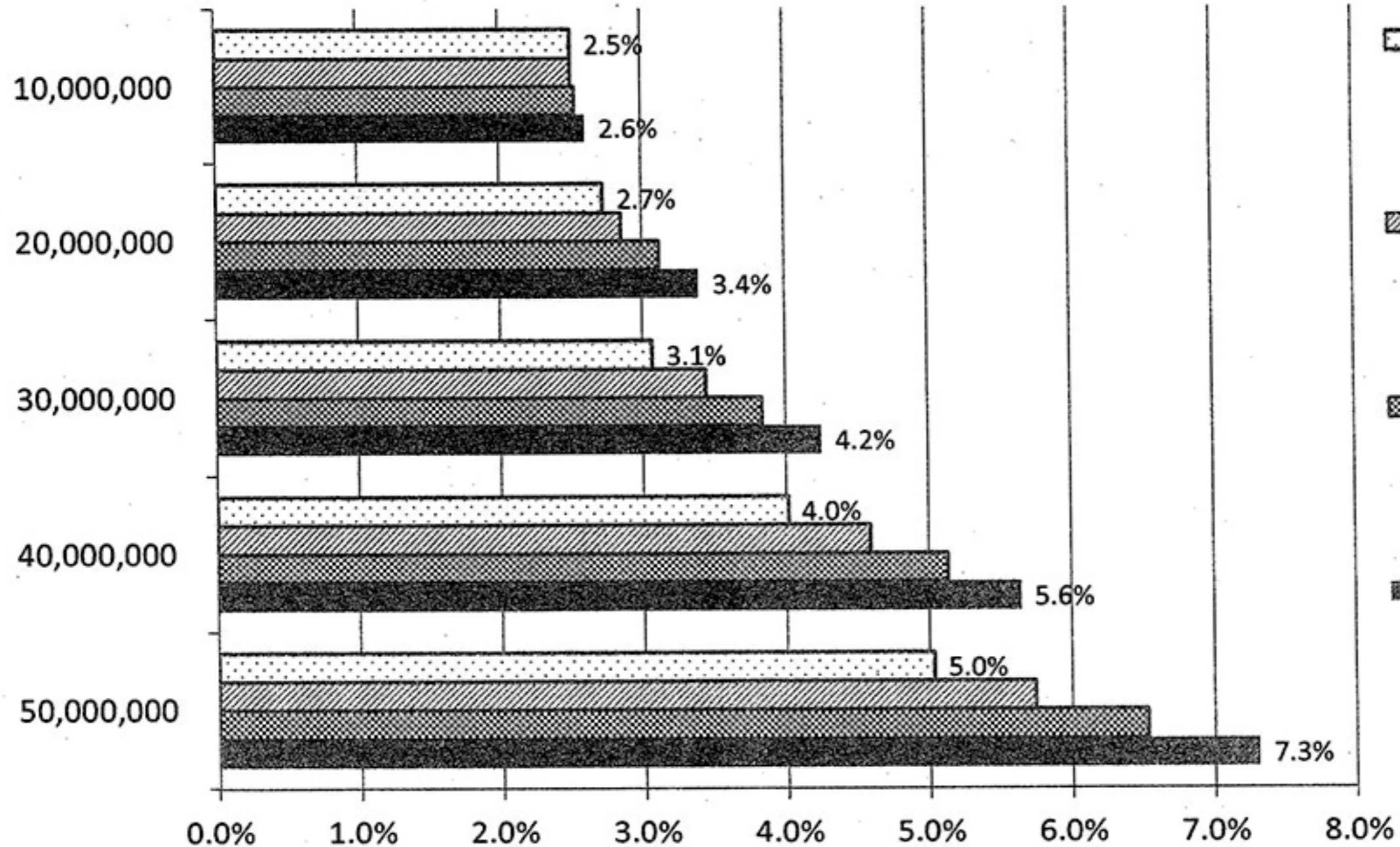


# Maximum Annual %age Increase in Median Tax Bill

## Maximum Year Over Year Tax Growth

Median tax bill  
of \$12,503 in  
FY '15

Borrowing  
Amount



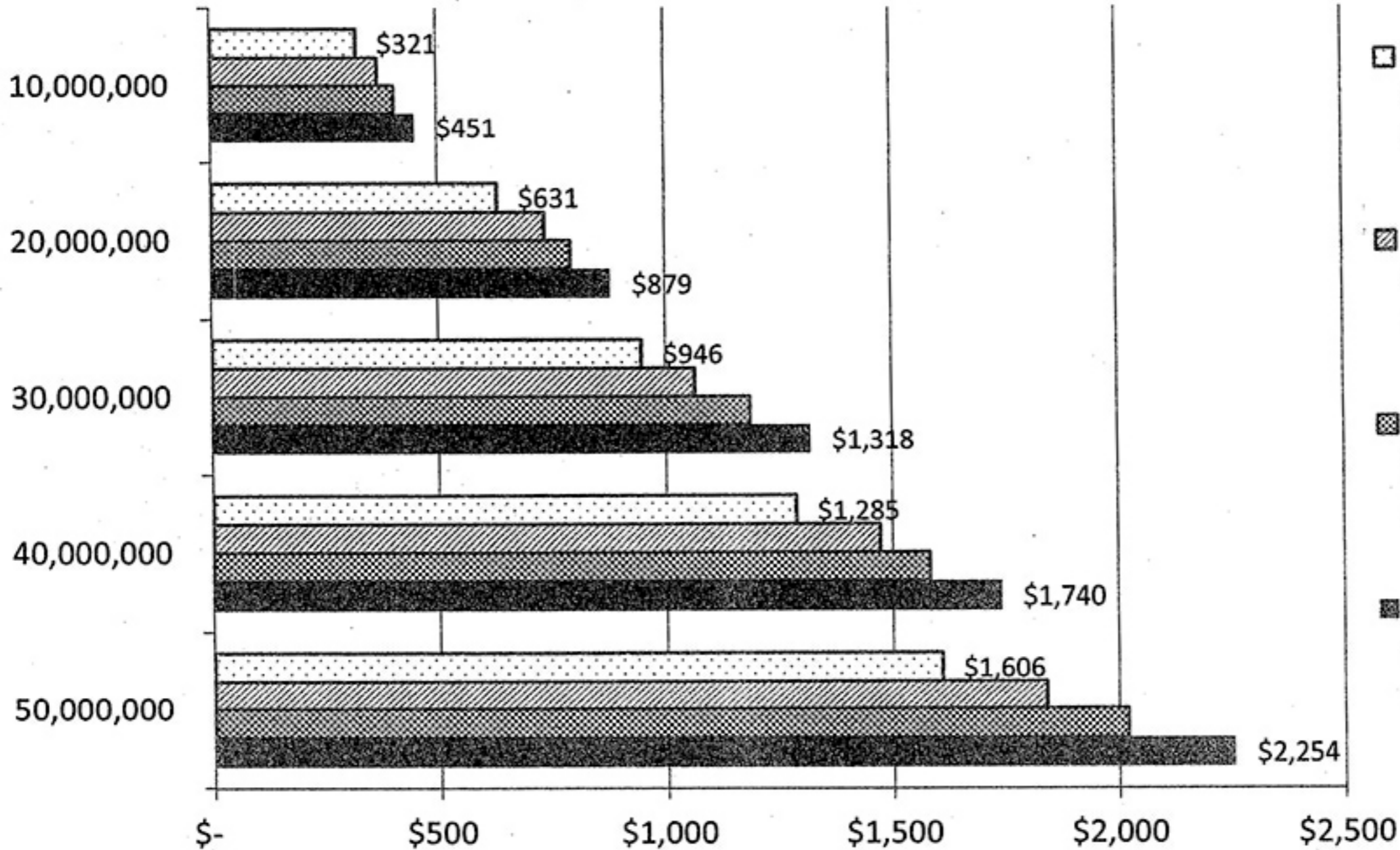
- Case 1: 30 year, 3.6% interest rate
- Case 2: 30 year, 4.6% interest rate
- Case 3: 20 year, 3.6% interest rate
- Case 4: 20 year, 4.6% interest rate

# Maximum Impact of New Debt on Median Tax Bill

Maximum \$ Median Tax Impact

Median tax bill  
of \$12,503 in  
FY '15

Borrowing  
Amount



- Case 1: 30 year, 3.6% interest rate
- ▨ Case 2: 30 year, 4.6% interest rate
- ▩ Case 3: 20 year, 3.6% interest rate
- Case 4: 20 year, 4.6% interest rate